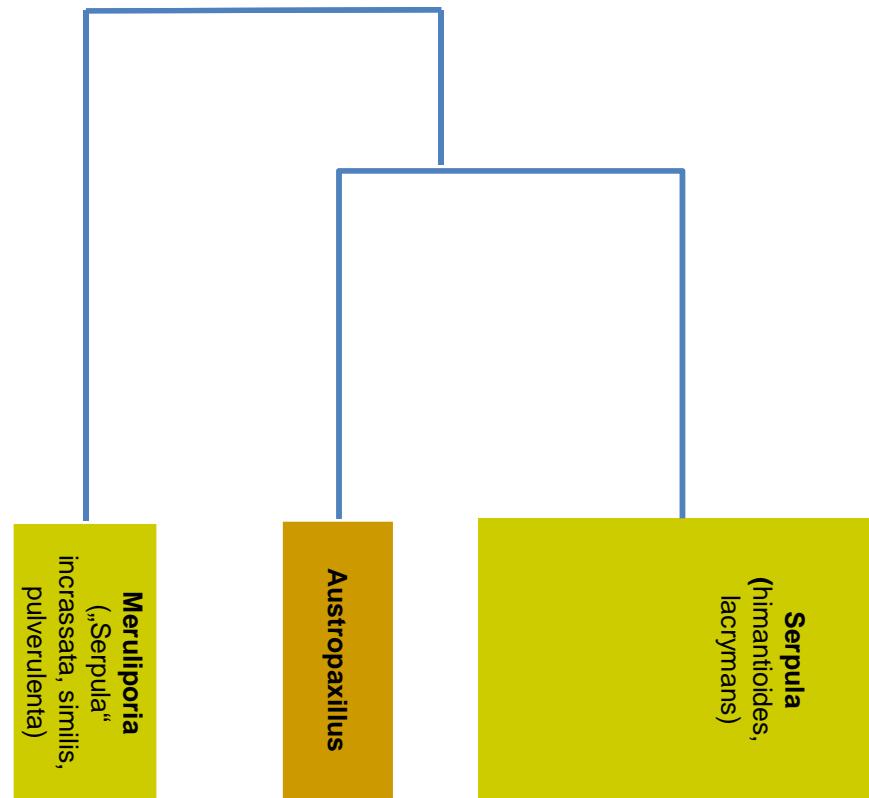


## Überblick über die Phylogenie der Serpulaceae



Quellen: MURRILL, Florida resupinate Polypores, *Mycologia* 34 (5), 1942; SKREDE et al. Evolutionary history of Serpulaceae (Basidiomycota): molecular phylogeny, historical biogeography and evidence for a single transition of nutritional mode, *Evolutionary Biology* 2011 11:230